

IMP^LPERO^A

DOMUS AUREA
RIVESTIMENTO
ANTICHIZZANTE A RILIEVO

OLD RELIEF DECOR EFFECT
REVÊTEMENT DÉCORATIF EFFET ANTIQUE À RELIEF



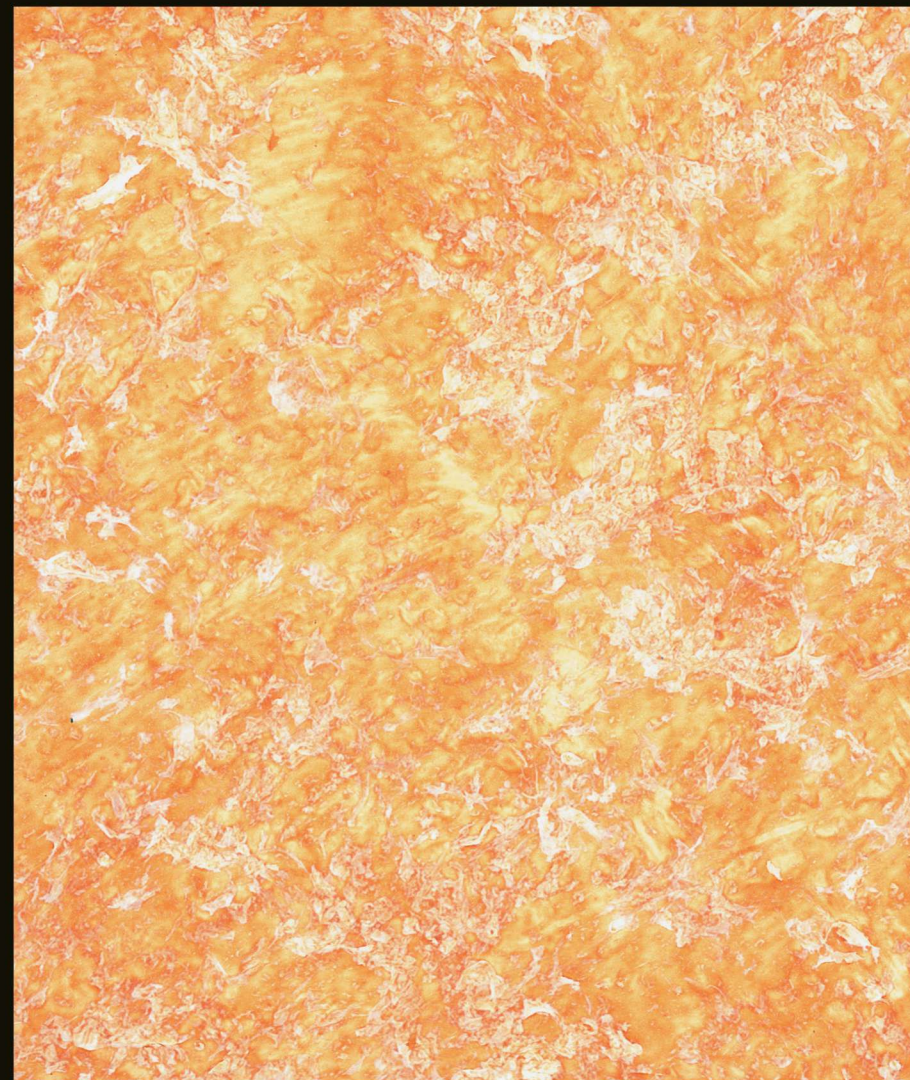
LOGGIA
industria vernici



IMPERO

DOMUS AUREA

RIVESTIMENTO ANTICHIZZANTE A RILIEVO
OLD RELIEF DECOR EFFECT - REVÊTEMENT DÉCORATIF EFFET ANTIQUE À RELIEF



Rivestimento decorativo di alto pregio con sfumature irregolari velate in leggero rilievo, che donano agli ambienti un aspetto prezioso ed antico. Indicato per la protezione ed il decoro di ville, appartamenti, hotel e negozi dove si vuole ottenere un effetto caldo ed anticato. Il prodotto è lavabile, idrorepellente, traspirante e previene la formazione di muffe.

Domus Aurea is a top quality decorative paint characterised by irregular shade veiled in a fine relief, such characteristic suit a precious and antique aspect to room. Thanks to its structure is suitable both to protect and decorate houses, floors, hotels, shops to have an hot and antique effect. The product is washable, water-repellent, guarantees the substrate maximum vapour permeability and aids the natural diffusion of humidity through the wall, avoiding the formation of mould.

Revêtement décoratif de haute qualité avec des nuances irrégulières voilées et légèrement en relief qui donnent aux milieux un aspect précieux et antique. Ce revêtement est indiqué pour la protection et la décoration de villas, appartements, hôtels et magasins où on veut obtenir un effet chaud et antique. Le produit est lavable, hydrofuge et transpirant ce qui permet d'éviter la formation de moisissures.

A6350000



A6351000



A6351100



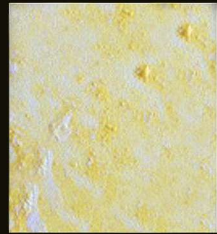
A6351200



A6351300



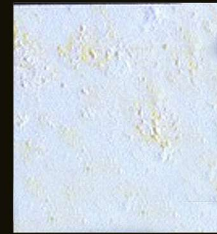
A6341000



A6341100



A6341200



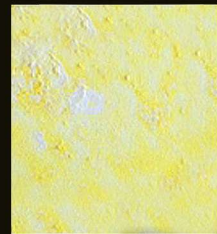
A6341300



A6361000



A6361100



A6361200



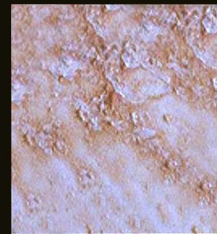
A6361300



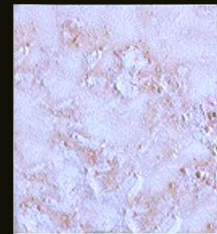
A6380000



A6380100



A6380200



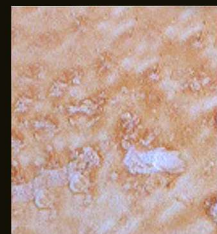
A6380300



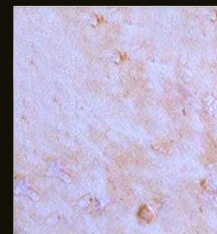
A6320000



A6320100



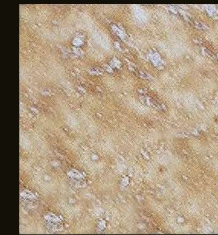
A6320200



A6320300



A6311100



A6311000



A6311200



A6311300



A6330000



A6330100



A6330200



A6330300



A6370000



A6370100



A6370200



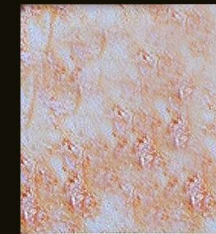
A6370300



A6340000



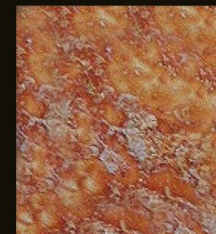
A6340100



A6340200



A6340300



A6350000



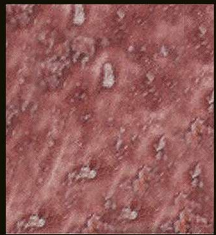
A6350100



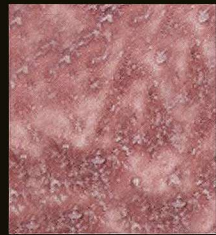
A6350200



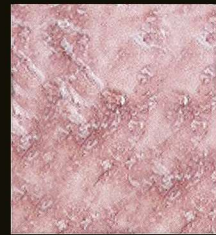
A6350300



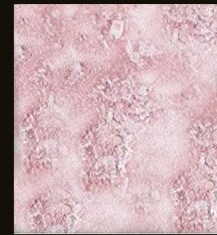
A6360000



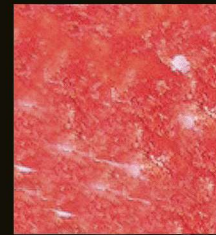
A6360100



A6360200



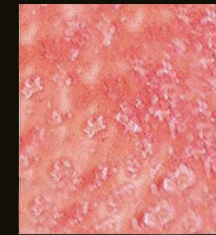
A6360300



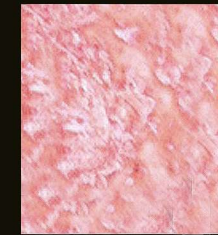
A6325000



A6325100



A6325200



A6325300



A6321000



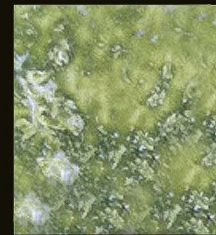
A6321100



A6321200



A6321300



A6335000



A6335100



A6335200



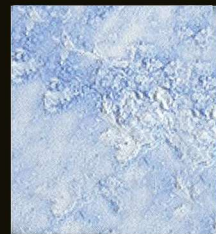
A6335300



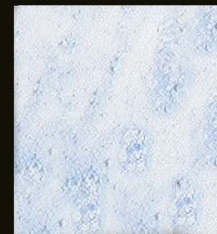
A6331000



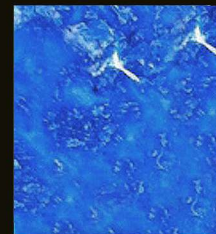
A6331100



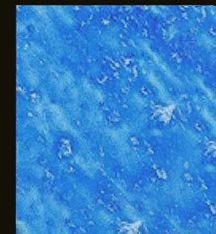
A6331200



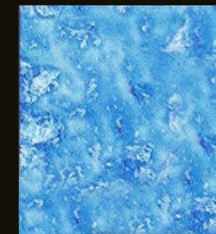
A6331300



A6375000



A6375100



A6375200



A6375300



A6390000



A6390100



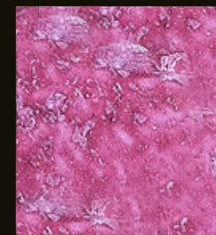
A6390200



A6390300



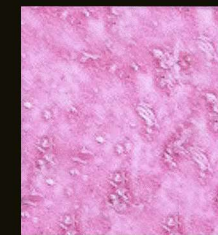
A6395000



A6395100



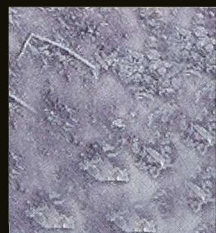
A6395200



A6395300



A6310000



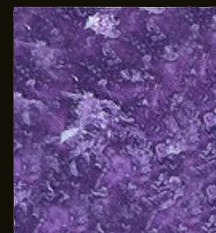
A6310100



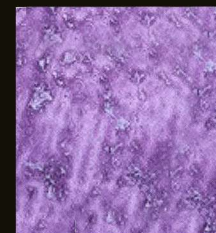
A6310200



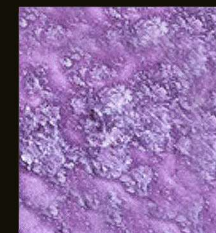
A6310300



A6396000



A6396100



A6396200



A6396300

Decorati

I^LM^IP^NE^RA^O



DOMUS AUREA

RIVESTIMENTO ANTICHIZZANTE A RILIEVO

Caratteristiche. Rivestimento decorativo di alto pregio con sfumature irregolari velate in leggero rilievo, che donano agli ambienti un aspetto prezioso ed antico. Indicato per la protezione ed il decoro di ville, appartamenti, hotel e negozi dove si vuole ottenere un effetto caldo ed anticato. Il prodotto è lavabile, idrorepellente, traspirante e previene la formazione di muffe.

Campi d'impiego. Indicata per la decorazione di interni, quali pareti colonne e muri pretrattati con ns finitura al quarzo.

Attrezzi per l'applicazione. Spalter o plafoncino cm 3x10, spatola in plastica tipo Loggia. **Diluizione del prodotto.**

Pronto all'uso. **Tempo di essiccazione.** A 20 °C fuori polvere 4-6 ore, asciutto 12 ore. **Preparazione dei supporti.**

Preparare la superficie con stucchi in polvere o in pasta (tipo Flystuk). Dopo circa 12 ore dalla fine dell'applicazione tratta-

re con carte abrasive: si consiglia una grana tipo P120. Applicare una mano di fissativo vinilico (tipo Fissamur) diluito con

acqua nel rapporto 1:1/1:3. Dopo 4-5 ore, applicare con rullo 2 mani di pittura Quarzo Liscio Loggia, a distanza di circa 5-

6 ore l'una dall'altra. Il colore della pittura alla farina di quarzo può essere bianco o della tonalità di colore della finitura pre-

scelta (con un grado di intensità più basso). **Applicazione della finitura.** Passate 6-8 ore, procedere alla stesura della

Domus Aurea incrociando le pennellate in modo uniforme sino al completamento della parete. Dopo 5-10 minuti passare in

modo leggero una spatola in plastica (tipo Loggia) schiacciando il fiocco. Dalle 4 alle 6 ore il fiocco schiacciato rientrerà nel

film producendo l'effetto desiderato. **Resa del prodotto.** 5-6 mq/L. **Ulteriori notizie.** Lavare gli attrezzi con acqua. **Dati**

tossicologici. Il prodotto è esente da solventi e da sostanze tossiche. Per maggiori informazioni richiedere scheda tossico-

OLD RELIEF DECOR EFFECT

Product Description. Domus Aurea is a top quality decorative paint characterized by irregular shade veiled in a fine relief, such characteristic suit a precious and antique aspect to room. Thanks to its structure is suitable both to protect and decorate houses, floors, hotels, shops to have an hot and antique effect. **Ideal Use.** Suitable for interior surface: walls, partition walls and columns pre-treated with Vinylic Primer. **Application Tools.** Decorative Spalter cm 3x10 cm and Loggia's plastic spatula. **Mixing Ratio.** Ready to use. **Drying Times.** Touch dry: 4-6 hours at 20°C, dry:12 hours at 20°C. **Surface Preparation.** Clean the surface to be decorated, removing any loose material and apply the recommended powder or dough plaster, Flystuk by Loggia Industria Vernici. After 12 hours sanding the surface with abrasive paper P120. Following this by applying a coat of vinylic fixative, Fissamur by Loggia Industria Vernici (in ratio 1:3 with water). Wait 4-5 hours until dry. Apply with a roller two coats of Vinylic Primer, waiting 5-6 hours between the coats. The Vinylic Primer can be white or one shade lower of the selected colour for the decorative effect. **Application Method.** Wait 6-8 hours until dry. Apply Domus Aurea by the spalter crossing the brush strokes, in order to distribute the product over the surface. After 5-10 minutes pass over the surface again with a Loggia's plastic spatula, applying light pressure to squash the medium flake without removing it. After 4-6 hours the flakes squared came back in the film producing the desired effect. **Theoretical Yield.** 5-6 square-metre/litre. **Tools Cleaning.** By water. **Toxicological Data.** The product is free of any harmful substances, solvent or other components containing heavy metal. For more information require toxicological or safety data sheet.

REVÊTEMENT DÉCORATIF EFFET ANTIQUE À RELIEF

Description du produit: Revêtement décoratif de haute qualité avec des nuances irrégulières voilées et légèrement en relief qui donnent aux milieux un aspect précieux et antique. Ce revêtement est indiqué pour la protection et la décoration de villas, appartements, hôtels et magasins où on veut obtenir un effet chaud et antique. Le produit est lavable, hydrofuge et transpirant ce qui permet d'éviter la formation de moisissures. **Domaines d'application:** Ce produit est indiqué pour la décoration d'intérieurs tels que murs, colonnes et murs prétraités avec notre finition au quartz. **Méthode d'application:** Spalter ou brosse cm 3x10, brosse en plastic type LOGGIA. **Dilution du produit:** prêt à l'usage. **Temps de séchage:** à 20° hors de poussière 4-6 heures, séché 12 heures. **Préparation des supports:** préparer la surface par des mastics en poudre ou en pâte (type FLYSTUK). Après 12 heures de la fin de l'application poncer avec du papier abrasif (grain conseillé type P120). Appliquer une couche de fixatif vinylique (type FISSAMUR) dilué avec eau selon le rapport de 1:1/1:3. Après 4-5 heures appliquer 2 couches de peinture QUARZO LISCIO LOGGIA au moyen d'un rouleau avec un intervalle de 5-6 heures l'une de l'autre. La couleur de la peinture au quartz peut être blanche ou de la tonalité de la couleur de la finition choisit (avec un degré d'intensité plus bas). **Application de la finition:** Après 6 à 8 heures de la fin de l'application de la finition au quartz procéder à l'application de la DOMUS AUREA en croisant les coups de pinceau de façon uniforme jusqu'à la fin du mur. Après 4-5 minutes, passez légèrement une spatule en plastic (type Loggia) en écrasant les flocons, après 4-6 heures le flocon écrasé entrera dans le film en obtenant ainsi l'effet désiré. **Rendement du produit:** 5-6 m2/L. **Ultimeurs renseignements:** nettoyer les outillages avec eau. **Informations toxicologiques:** le produit ne contient pas solvants ou substances toxiques. Pour ultérieurs reinsegnements, faire référence à la Fiche de sureté.



Loggia Industria Vernici S.r.l.

04016 B.go San Donato - Sabaudia - (LT)
 zona industriale via Colle d'Alba di Levante
 telefoni (+39)0773562212 • (+39)0773562042
 (+39)077350058 fax (+39)0773562034
 www.loggia.it • e-mail: commerciale@loggia.it



ESEMPI DI TECNICA APPLICATIVA

APPLICATION EXAMPLES

EXEMPLES DE TECHNIQUE POUR L'APPLICATION



Finitura spatolata
 Antique finishes - Finition spatule